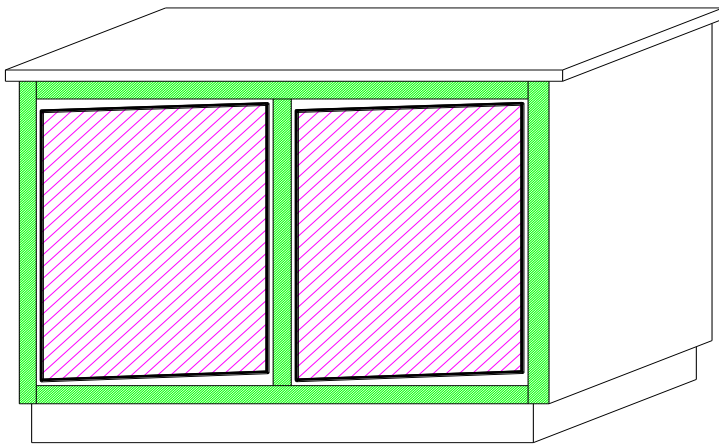
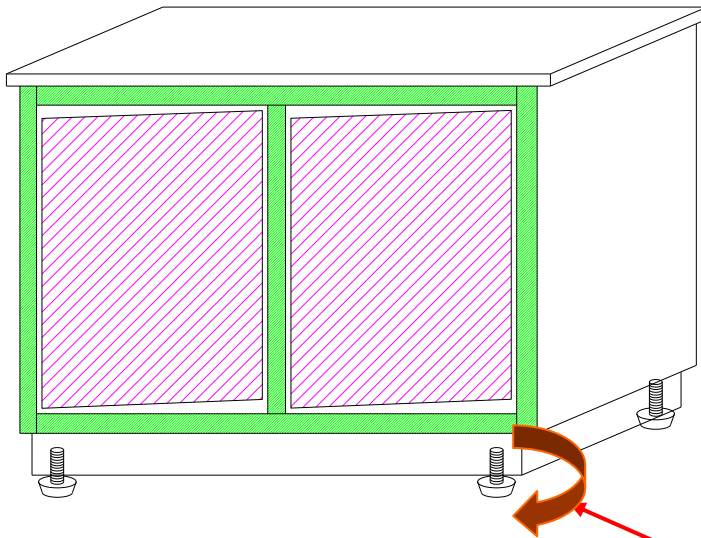


## Case Leveling / Door Adjustment



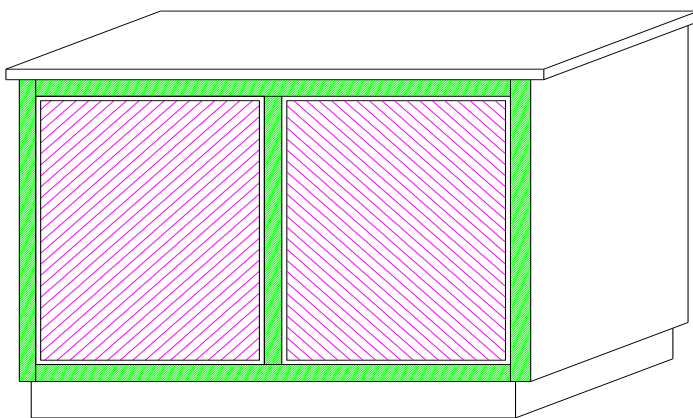
### Step 1 (Identify any issues with cases being unlevel and or doors not being parallel to each other)

If cases are unlevel / doors are not parallel as shown is the sketch to the left then follow the directions in step 2 so the case is level, the appearance is satisfactory and the doors function properly.



### Step 2 (Adjust the case levelers to assure case is level and doors are adjusted properly)

First put a level on the case and adjust the four levelers to get the case as level as possible (lift the case in the corner being adjusted to take pressure off the leveler). Should the doors still be slightly out of align then proceed with the following: If hinge side of the door is higher than the non-hinge side of the door, then raise the front corner of the case being adjusted to take pressure of the guide and screw the leveler approximately one turn (counter clockwise) to raise that front corner. Repeat one turn each time until the doors are parallel (as shown in step 3).



### Step 3 (Case leveling and door adjustment complete)

Case leveling and door adjustment is complete. Should further adjustment be required then repeat step 2 as necessary.